

Agenda

Greetings from the Board	5
CAP's Philosophy.....	6
Private Label.....	7
Production	8
Quality Control, R&D	9
Product Selection	11
Clear Coats	12
Fillers	14
Putties	16
Miscellaneous Products	18
Packing Information	20



Greetings from the Board



Dear Customers,

Dear Readers,

since 2009 we have been supplying quality coating materials to our professional customers in the automotive refinishing industry.

Since the very beginning we were focusing strictly on “Private Label” and we have never developed any own brand.

While many market players observed and judged this move skeptically, our decision ultimately turned out to be correct: the evolution of the Refinsh-Market proved us to be right.

More and more customers bank on their own brand – for various reasons.

We are very proud and happy that many new customers are finding their way to us and consequently to their own brand. It is still absolutely exciting for us to be part of our partners’ success stories.

We are also aware, that the center of any action is always a human being. From the decision to say “YES” to the very own brand up to the design of the trademark and label: it is always the particular and very individual decision of a person.

Also at CAP people are eager to fulfill, respectively to exceed, our customers’ expectations. Be it in production, in the laboratories, in logistics or sales, all CAP-Team members are doing their best every day in order to keep the brands of our customers on the winning track!

In order to express our focus on people and Private Label Business, we have decided to change our logo consequently:

CAP – THE PRIVATE LABEL PEOPLE

We would like to thank our partners and customers for their trust in CAP and we are looking forward to a fruitful cooperation in the next years!

Sincerely yours,

Rafał Zmysłowski

CAP's Philosophy

CAP – Chemical Alliance Polska Sp. z o.o. is a Polish / German joint venture company, produces quality coatings for the automotive refinish sector in Goleniow, North-West Poland. Our main field is to create and support Private Label Strategies for our customers and partners in industry and trade all over the world.

CAP has a high level of expertise in the automotive refinish market. This expertise will be at your complete disposal during our cooperation in order to achieve our ultimate objective together with you: perfect results!

Complex Customer Structure:

Due to our specific structure of distribution, we have to be aware that the requirements of our customers in trade and industry as well as those using our products referring to “perfection” naturally differs very much, but are yet the same.

Our directly buying customers are primarily specialized trading organizations which have been already established on their respective refinish markets for a considerable time. Here, a “perfect result” in the first place is the commercial success, which begins with the selection of the right partner.

On the other hand, the customers of our partners are mostly professionally operated body shops. The “perfect result” is visible to the naked eye – a perfect paint job! Only this brings economic success to a car painter as entrepreneur, which starts in this case with the selection of the right product!

For a producer of refinish materials, there are basically two approaches to find the way to success:

- ❖ “Technically Possible” approach
- or
- ❖ “End-User in Focus” approach

The “Technically Possible” approach is connected with a huge use of marketing measure packages in order to help to explain the technical advantages of the innovations to be introduced to the market. In the past, those “innovations” failed very often in face of reality and turned out to be flops!

End-User in Focus!

The “Technically Possible” approach has never been the approach of CAP – from the very beginning, our product developments have been based on the requirements of the end-user.

Our key issue is the following question:

“If a professional car painter had the possibility to create refinish materials granting real advantages in his daily job, what would they be like?”

With exactly this proviso, we started the development of new

refinishing qualities in our laboratories, being tailored exactly to the actual requirements of today's car painters!

Gaining the Competence:

The necessary knowledge about actual requirements of the refinish experts has been brought into CAP by two alliance partners.

Due to its well-established sales network, CAP's parent corporation has more than 5.000 direct customer contacts in the body shop per week! This allows us to receive comprehensive and meaningful feedbacks directly from the end-users. Together with the decades of experience of our alliance partner in the worldwide sales of refinish non-paint materials and the well trained sales and marketing team of CAP, we have concentrated a refinish competence in our company – second to none!

CAP's Circle of Success:

Already today, CAP's products belong to the winners in the body shop. A professional painter appreciates the quality of our products and understands the clear advantages of their uses very quickly. CAP's materials are safe in application, stable by quality, very reliable and deliver reproducible results. Our products are helping refinish experts to optimize their workflow to deliver better refinish work and to increase the productivity of their enterprises: a perfect result!

Thanks to the positive response of end-users to CAP's qualities, the sales and marketing job of our partners in trade is considerably easy, a door to further business is already open, and the end-user is willing and interested to test other products, too. Turnover and profit of our dealers are increasing: a perfect result!

The success of our “End-User in Focus” approach speaks for itself and is to the advantage of all parties involved:

- ❖ satisfied, successful car painters
- ❖ satisfied, successful dealers
- ❖ satisfied, successful CAP

Private Label

The core competence of CAP is clearly the “Private Label Business”. Our customers and partners are completing their own product – and service program with the products and services offered by CAP. Our partners select only what they actually need and also pay only for this.

Possibilities of cooperation with CAP are absolutely not limited to filling standard formulations into cans fitted with a customer's label. This does not meet our ultimate ambition to perfection.

Our range of products and services comprises in particular:

a) Product Related:

- ❖ Cooperation in outsourcing of complete productions, or parts of it
- ❖ Consultation and support in compilation of complete product ranges
- ❖ Consultation and support in selection of particular products to complete existing product ranges
- ❖ Creation and production of custom-made packaging and product design
- ❖ Design, production, storage and inventory management of customers' individual labels
- ❖ Modification of the existing qualities to customers' requirements in our own laboratories
- ❖ Development of complete new products to customers' requests
- ❖ Continuous development of market-conform products, according to the end-user feedback

b) Service Related:

- ❖ Consulting in all questions of marketing
- ❖ Product trainings of our customers' technicians and / or sales force in our own training facilities
- ❖ Sales trainings
- ❖ Sales promotion and motivation events for our customers and / or their customers
- ❖ Taylor made logistic solutions
- ❖ Continuous introduction of new products to our customers



Trust and Competence

There is no successful cooperation in Private Label Business without trust.

For this reason, we do not state any of our customers' names to third parties. Entrusted information to our care – or even your formulations – will always stay inside CAP. The products being exclusively developed for our customers are only available for them and for no one else.

We commit ourselves to absolute secrecy from the very beginning of our cooperation with new partners and emphasize this by signing a concise Private Label Contract, regulating the most important issues from day one.

For us, trust and confidentiality are the most important conditions for a successful cooperation.



Production

Experience and good ideas are nothing when one cannot put them into action! The bases for the high and stable quality of CAP's products are state-of-the-art production facilities, fully equipped laboratories and testing installations, as well as converting only the finest raw materials.

Our production has been built "on the green field". Due to this circumstance, we could have been focused on optimum processes already in the planning phase since no existing installations or buildings had to be taken into consideration.

Our production is fully automated where possible and useful. In order to respond flexibly to customers' demands or to be able to produce the smallest lots and to help our customers quickly and with no setbacks, you will also still find real craftsmanship on site!

Our experienced and highly motivated colleagues from the production department guarantee that our high quality level can be kept at all times, in the best interest of our customers!



CAP-Added Value

What is so special about CAP?

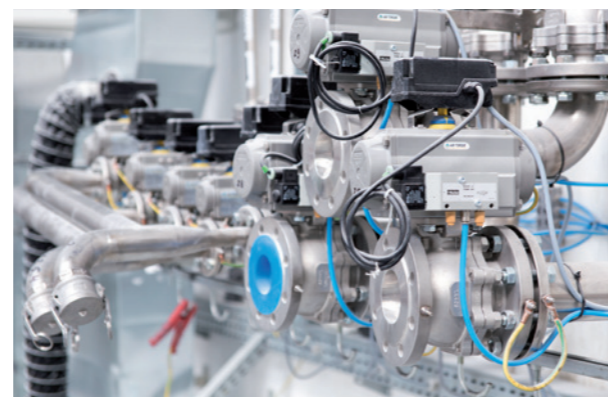
Perhaps no other company of our industry offers this type of competence and so many advantages from one source like CAP!

Apart from our absolute alignment to our customers and their individual requirements (trade / craft), our high-class products and our comprehensive services, CAP has something on offer which is getting harder to be found these days:

Personal, individual service!

No hotlines, no anonymous voices – you can get in touch with your sales agent directly – very often outside official office hours and on weekends, too!

Obviously, our sales team also strives for perfection and therefore you, our customers and partners, can achieve perfect results!



Quality Control, Research and Development

Perfection always starts at the beginning of a process – in our case with the raw materials being used in our production process.

In our production, only raw materials of renowned producers, highly reputed in their respective fields, are used.

Our specialized lab crew is checking all raw materials that are arriving at the plant in order to verify that our strict requirements to quality are being matched. Liquid raw materials, such as resins and solvents, are being carefully inspected before the product is filled into their dedicated storage tank. In the unlikely event that off-spec material has been delivered by one of our suppliers, we will reject the offloading completely, thus we can assure that no previously delivered batch will be contaminated. This way we do not only assure the high quality of our products, we also limit the production of non-quality compliant products and therefore reduce the quantity of materials that would have to be disposed of. This is good for our customers but also good for our environment.

In case of any doubt about the quality of a solid raw material, the respective batch will be separated from the general stock and will be stored in a dedicated quarantine warehouse until return delivery will take place.

Another part of our laboratories is dedicated to the control of produced materials. At CAP, no product will be sent to the filling lines without being checked for its quality and approved by our quality control experts. A further measure how to reduce the number of quality claims to the minimum on the one hand and to reach perfection on the other one!

Batch samples for all produced batches are kept in a dedicated warehouse, enabling a quality re-check during the guaranteed shelf life period.

The largest and most fascinating sector of our laboratories is certainly the research and development department. In this area, the ideas for new or better products that we get from the body shops worldwide are brought to life. This area is considered as being the playground of our chemists: a vast number of powders, liquids and pastes awaits to be combined into something completely new, something that a professional car painter waits for to ease his daily job and to optimize his work flow: a perfect product!

Until a new product is introduced into the market, several tests are being made. This starts with tests in our laboratories, where the product is being tested thoroughly. Extreme conditions, partly exceeding the real stress of normal daily use, are simulated: cold, heat, humidity, UV-rays, corrosion; the qualities are being intensively tested, depending on application and material.

After the materials have successfully passed our laboratory tests, the first step of practical tests follows. The candidates are being evaluated in our own training center by our trainers, all very experienced and highly skilled car painters. When one of the products has to be improved after the first practical tests, it has to pass a laboratory test again before we will give it another try in our training center!

After the successful evaluation by our experts, the materials will be sent out to selected partners all over the world for further practical tests. This feedback is being analyzed internally one more time and will lead, if necessary, to further adjustments of the product.

Only when we are really sure to have a good and meaningful product to offer, we will introduce it to you, our customer.

TÜV NORD has certified, that all our processes and measures concerning safety, quality and environment are in full accordance to: EN ISO 9001:2015, EN ISO 14001:2015 and PN-N 18001:2004!



New products, carefully developed



Product Selection

On the following pages you will find comprehensive information about our core product program. These are our basic materials, which we are able to deliver usually within the shortest time. Products that are tailored on an individual customer's request, or those that have been developed exclusively for one of our partners, naturally are not listed in these tables since they are not available to third parties.

These tables will enable you to have a brief insight into the possibilities you may have as a customer cooperating with CAP. They are an ideal basis as the starting point for discussing the future business between our companies.

In order to offer you a quick orientation, we have categorized our products as follows:

- ❖ Premium
- ❖ Classic
- ❖ Economy

With this categorization, you may locate the products you require for your particular market segment.

Before we explain the individual product categories in detail, we like to point out, that our strict requirements to raw material quality and the constant quality of our products are applying to all products from all product groups and product categories, no matter if "Premium", "Classic" or "Economy"!

Premium:

Products from the Premium category may challenge any competition on the market! They are fulfilling or exceeding the highest expectations of modern car painters concerning their application, as well as the first class quality of the achieved refinish results.

Some of our products from the Premium category have set new standards concerning the quality of products in this segment.

Premium category products are without exception delivering decisive technical advantages and are therefore significantly optimizing the body shop workflow or they deliver an absolutely perfect painting result. Some are even delivering the two aspects altogether.

The Premium category is therefore the choice for companies that aim to establish themselves in the upper market segment and look for appropriate products and services to do so. Products that actually meet the specific requirements of the Premium category will enable you to achieve more attractive margins in the high price segment. Naturally, the one who offers high quality products often has the best reputation in the market; this builds trust and attracts the attention of new customers, one very positive side-effect of the Premium product strategy.

Classic:

Certainly, our products from the Classic category are not "of the yesterday"! They are actually "classics", delivering only positive feedbacks, being appreciated by everybody! Think about "classic movies", "classic sports cars", "classic beauties" – all recognized as positive aspects! After all, "classic" comes from "class"!

These products are the closest friends in the body shop which you do not want to miss anymore once you have used them!

Products from the Classic Segment are addressed to demanding customers, seeking to sell reliable and practice oriented products, leaving nothing to be desired!

Thanks to a large number of basic formulations, it will be easy for you to select the right product for your particular market requirements or the right starting point for the development of your individual quality.

Economy:

Products from the Economy category are characterized by their excellent cost performance ratio. Right from the beginning, these qualities have been developed for markets or market segments having a strong focus on the procurement costs.

Economy products enable the user to obtain very good repair results, just like products from the Premium and Classic category. They have been developed and produced following the very same strict CAP quality policy but offer only limited technical advantages and / or technical innovations beyond that.

For this reason, the Economy category is an ideal solution for partners who like to extend their activities to other market segments or who simply would like to round up their product range. These qualities are also suitable if our partners have to respond, perhaps just for a shorter period of time, to strong local competition.

CAP – Product Selection in General:

The CAP sales team is on hand to assist you to select your new branded items – over the phone or in person on site. We want to point out that the information presented in this brochure are given to our best knowledge and believe but without guarantee or liability. We strongly recommend to refer to the Technical Data Sheet before testing our products.



PREMIUM

CLASSIC

ECONOMY

Our Clear Coats:

Product Category	PREMIUM	PREMIUM	PREMIUM
Product	CLB-03.049	CLB-03.016	CLB-03.035
Description	Clear Coat VOC/R	Clear Coat VOC/P	Clear Coat VOC/S
Features	Very fast curing VOC conform clear coat from the new “Rapid” product family. New benchmark in the premium-segment for fast curing clear coats. Despite the very fast curing, no compromise to surface quality, especially gloss, must be made. Absolutely no loss of gloss after curing. Easy and economical application, easy polishing also days after application.	Sets new standards for clear coats of the Premium Segment. Exceeds all expectations concernig application, levelling, brilliance, UV stability and scratch resistance. Polishing even after 48h still possible, spray booth use recommended.	Ultra fast drying 1:1 clear coat. Very good flow, complete UV stability, scratch resistance. Designed for fast and efficient repairs. Ready to be polished after 120 min at 20°C.
Surface	*****+	*****+	*****
Gloss	*****+	*****+	*****
Easy Application	*****	*****	*****
Efficiency	*****	*****	*****+
Hardener standard	CDL-04.058	CDL-04.028	CDL-04.046
Hardener fast	-----	CDL-04.042	-----
Hardener very fast	-----	CDL-04.039	-----
Hardener slow	-----	CDL-04.037	-----
Hardener extra slow	-----	CDL-04.054	-----
Hardener universal	-----	-----	-----
Specification:			
VOC-Conform	yes	yes	yes
Mixing Ratio	2:1 by volume	2:1 by volume	1:1 by volume
Drying Time at 60°C	15 min	15 - 45 min (dep. on hardener)	15 - 20 min
Drying Time at 20°C	3.5 - 4 h	4 - 16 h (dep. on hardener)	1.5 - 2 h
Infrared Drying	8 - 15 min	12 - 15 min (short and med. wave)	not recommended
Fully Cured	4 days at 20°C / 15 min at 60°C +3 days at 20°C	7 days at 20°C	5 h at 20°C
Thinner Addition	not recommended	max. 10 vol.%(CDL-07.015/002/017)	max. 8 vol.%(CDL-07.002)
Colour	slightly yellow	colourless / slightly yellow	colourless / slightly yellow
Use on Water Borne Base Coats	yes	yes	yes
Use on Solvent Borne Base Coats	yes	yes	yes
Pot Life at 20°C	50 min	30 - 60 min (dep. on hardener)	up to 30 min
Spray Viscosity (20°C, DIN cup 4 mm)	16 - 18 s	18 - 22 s	14 - 16 s
Nozzle	1.3 mm	1.2 mm	1.2 mm
Number of layers	1.5 (½ thin closed coat + 1 full wet coat)	2 normal coats	2 normal coats
Theoretical coverage	10 - 12 m²/l	11 - 12 m²/l	12 - 13 m²/l
Film Thickness	50 - 60 µm	50 - 60 µm	50 - 60 µm
Flash Off at 20°C	5 - 7 min	7 - 10 min	3 - 7 min
Shelf Life	12 months	18 months	12 months
Density	1.00 - 1.01 g/cm³	0.98 - 0.99 g/cm³	1.01 - 1.03 g/cm³
VOC Content	< 420 g/l	< 420 g/l	< 420 g/l
Remark			

CLASSIC	CLASSIC	CLASSIC	CLASSIC	CLASSIC
CLB-03.006	CLB-03.031	CLB-03.032	CLB-03.014	CLB-03.051
Clear Coat VOC/C	Clear Coat VOC Opaque	Clear Coat VOC Light Opaque	Clear Coat HS Anti Scratch	Clear Coat VOC/J
VOC compliant UHS clear coat. Benchmark quality. Meets all expectations concerning the desired results concerning gloss, levelling etc. Curing may be adjusted with comprehensive range of hardeners.	Medium solid 2K clear coat for refinish and industrial applications. Very withstanding against weathering and mechanical influences. Gloss level: 5 - 10 (depending on film-thickness).	Medium solid 2K clear coat, general characteristics like CLB-03.031, gloss level is satin like at 25-30.	High solid anti scratch clear coat with high withstanding surface. Very good UV stability.	UHS fast curing clear coat. Very good balance between hardness and elasticity. Allows to achieve OEM-structure or mirror-like effect. It provides a high-gloss finish with a very good UV resistance.
*****	****	****	****	*****
*****	-	-	****	*****
****	*****	*****	****	*****
****	***	***	****	****
CDL-04.003	CDL-04.043	CDL-04.043	CDL-04.019	CDL-04.067
CDL-04.005	CDL-04.044	CDL-04.044	CDL-04.032	-----
CDL-04.009	-----	-----	CDL-04.063	-----
CDL-04.006	-----	-----	CDL-04.034	-----
CDL-04.031	-----	-----	CDL-04.062	-----
-----	-----	-----	CDL-04.059	-----
Specification:				
yes	yes	yes	yes	yes
2:1 by volume	2:1 by volume	2:1 by volume	2:1 by volume	2:1 by volume
10 - 50 min (dep. on hardener)	15 - 30 min (dep. on hardener)	15 - 30 min (dep. on hardener)	15 - 50 min (dep. on hardener)	20 min
6 - 16 h (dep. on hardener)	2.5 - 3 h (dep. on hardener)	2.5 - 3 h (dep. on hardener)	7.5 - 14 h (dep. on hardener)	5.5 - 7.5 h
12 - 15 min (short and med. wave)	10 min (short and med. wave)	10 min (short and med. wave)	10 min (short and med. wave)	8 - 15 min
7 days at 20°C	5 - 7 days at 20°C	5 - 7 days at 20°C	5 - 7 days at 20°C	7 days at 20°C / 20 min at 60°C + 5 days at 20°C
max. 10 vol.%(CDL-07.015/002/017)	not recommended	not recommended	not recommended	not recommended
colourless / slightly yellow	milky white - opaque	milky white - opaque	colourless	colourless / slightly yellow
yes	yes	yes	yes	yes
yes	yes	yes	yes	yes
20 - 60 min (dep. on hardener)	2 - 2.5 h (dep. on hardener)	2 - 2.5 h (dep. on hardener)	up to 2 h	30 - 40 min
18 - 22 s	18 - 22 s	18 - 20 s	16 - 18 s	17 - 21 s
1.2 mm	1.3 mm	1.3 mm	1.3 mm	1.3 mm
2 normal coats	2 normal coats	2 normal coats	2 normal coats	1.5 (½ thin closed coat + 1 full wet coat)
10 - 11 m²/l	7.5 m²/l	7.5 m²/l	9 - 10 m²/l	9.5 - 11.5 m²/l
50 - 55 µm	50 - 60 µm	45 - 55 µm	45 - 50 µm	50 - 60 µm
7 - 10 min	5 min	5 min	5 - 7 min	3 - 5 min
18 months	9 months	9 months	18 months	12 months
0.98 - 0.99 g/cm³	0.98 - 1.00 g/cm³	0.98 - 1.00 g/cm³	0.97 - 0.99 g/cm³	0.99 - 1.01 g/cm³
< 420 g/l	< 840 g/l	< 840 g/l	< 840 g/l	< 420 g/l

CLASSIC	CLASSIC	ECONOMY	ECONOMY	ECONOMY
CLB-03.052	CLB-03.057	CLB-03.012	CLB-03.010	CLB-03.019
Clear Coat HS/F Anti Scratch	Clear Coat HS/P Anti Scratch	Clear Coat MS/J Anti Scratch	Clear Coat MS/P Anti Scratch	Clear Coat MS/E Anti Scratch
Fast drying HS anti scratch clear coat. Especially enhanced scratch-resistance and waterrepellent properties due to incorporated fluorocarbon technologies. Perfect levelling, long pot life and high UV, weather and chemical resistance.	High solid anti scratch clear coat with best in class surface and gloss in the HS-category. Very easy applicaton, allows a safe application also in adverse working environments. Very good chemical, mechanical, weather and UV resistance.	Medium solid clear coat with reduced drying time. Scratch resistant.	Medium solid clear coat, anti scratch and high UV stability. Good flow and self leveling properties.	Medium solid clear coat, good UV stability and flow, good chemical and mechanical resistance.
****	*****	***	***+	***
****	****+	***	***+	***
****	****+	****	****	****
+	*	***	***	***
CDL-04.068	CDL-04.070	CDL-04.017	CDL-04.001	CDL-04.024
-----	CDL-04.073	-----	CDL-04.041	-----
-----	-----	-----	-----	-----
-----	-----	-----	CDL-04.045	-----
-----	-----	-----	-----	-----
-----	-----	CDL-04.059	CDL-04.059	-----
Specification:				
yes	yes	yes	yes	yes
2:1 by volume	2:1 by volume	2:1 by volume	2:1 by volume	2:1 by volume
20 min	20 - 30 min (dep. on hardener)	20 - 30 min (dep. on hardener)	20 - 40 min (dep. on hardener)	30 min
5 - 6 h	5 - 8 h (dep. on hardener)	5 - 10 h (dep. on hardener)	8 - 11 h (dep. on hardener)	8 - 9 h
8 - 15 min	8 - 15 min	10 min (short and med. wave)	10 min (short and med. wave)	10 min (short and med. wave)
7 days at 20°C / 20 min at 60°C + 5 days at 20°C	7 days at 20°C / 20 - 30 min at 60°C + 5 - 7 days at 20°C (dep. on hardener)	5 - 7 days at 20°C	5 - 7 days at 20°C	5 - 7 days at 20°C
not recommended	not recommended	not recommended	not recommended	not recommended
colourless / slightly yellow	colourless / slightly yellow	colourless	colourless	colourless
yes	yes	yes	yes	yes
yes	yes	yes	yes	yes
60 min	40 - 110 min (dep. on hardener)	up to 1 h	up to 1.5 h	up to 2 h
15 - 17 s	14 - 16 s	14 - 16 s	14 - 16 s	14 - 15 s
1.3 mm	1.3 mm	1.3 mm	1.3 mm	1.3 mm
2 normal coats	2 normal coats	2 normal coats	2 normal coats	2 normal coats
8 - 9 m²/l	8.5 - 9.5 m²/l	8 - 9 m²/l	8 - 9 m²/l	7.5 m²/l
50 - 55 µm	50 - 55 µm	40 - 45 µm	40 - 45 µm	35 - 40 µm
5 - 7 min	5 - 7 min	5 - 7 min	5 - 7 min	5 - 7 min
12 months	12 months	18 months	18 months	18 months
0.97 - 0.98 g/cm³	0.98 - 0.99 g/cm³	0.96 - 0.97 g/cm³	0.96 - 0.97 g/cm³	0.96 - 0.97 g/cm³
< 840 g/l	< 840 g/l	< 840 g/l	< 840 g/l	< 840 g/l

Our Clear Coats:

The “Premier League” of refinish materials! Today’s clear coats have complex tasks which were partly performed by base coats in the past.

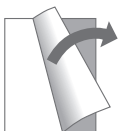
The clear coat ensures gloss and long-lasting protection of the refinished parts and, in addition, it brings special effects of metallic, pearl or interference pigments of the base coat to life!

For this reason, a professional car painter is very skeptical about new clear coat qualities. At the end, a bad clear coat can destroy the previously perfect paint job, making additional interminable and unpopular sanding jobs at the respective panel necessary.

For this reason, our clear coats receive our special attention in development and production!

Some of CAP’s clear coats may be adjusted to respective working, job or climate conditions with special hardeners and additives which is safe and uncomplicated to be done directly at the working place of a car painter.

Furthermore, most of CAP’s clear coats may be polished even after several days as easy as some hours after application of the coat! This offers a big potential for process optimizations in the body shop: many parts may be still sprayed shortly before the closing time because polishing on the next day will not cause any problems! The same applies to Fridays or days prior to national holidays since the clear coat may still be polished to perfection without additional effort and without any concession to the surface quality on Monday or the following day!



Our Fillers:

Product Category	PREMIUM	PREMIUM	PREMIUM
Product	CPG-02.091	CPG-02.014	CPG-02.011
Description	4:1 Filler "R" Grey	5:1 Filler THN Grey	5:1 Filler THI
Features	Newly developed fast curing acrylic filler from the new "Rapid" product family. Ready to use, no thinner must be added. Suitable for all repair jobs, due to fast curing especially for quick repairs or smaller jobs. Very good filling capacities, easy to apply, no runs, very good leveling. Very easy sanding without any sanding paper clogging. Safe curing also at temperatures significantly below 20°C.	Filler on the base of hydroxy-acrylic resin. Especially destined for the application on steel and GRP-surfaces as well as on panels being treated with anti-corrosion primers. Suitable for most top-coat shades (CPG-02.014). Perfect for dark shaded top-coats (CPG-02.015). Perfect for very light shaded top-coats (CPG-02.016).	Premium filler, high thixotropy, very good filling, easy application. Will not run even in thick layers on vertical substrates. Latest anti corrosion technology. Meets highest expectations, ideal for high quality repairs. Use in spray booth only.
Application	*****	*****	*****
Filling	****	*****	*****+
Sanding	*****	*****	*****
Efficiency	*****	****	***
Hardener standard	CDL-04.057	CDL-04.012	CDL-04.023
Hardener fast	-----	CDL-04.061	-----
Hardener very fast	-----	-----	-----
Hardener slow	-----	-----	-----
Hardener extra slow	-----	CDL-04.051	-----
Hardener universal	-----	CDL-04.059	CDL-04.059
Specification:			
VOC-Conform	yes	yes	yes
Mixing Ratio	4:1 by volume	5:1 by volume	5:1 by volume
Drying Time at 60°C	15 - 20 min	20 - 50 min (dep. on hardener)	45 - 50 min (dep. on hardener)
Drying Time at 20°C	2.5 - 3 h	4.5 - 12 h (dep. on hardener)	not recommended
Infrared Drying	12 - 15 min (short and med. wave)	7 - 15 min (short and med. wave)	12 - 15 min (short and med. wave)
Thinner Addition	not recommended	20 - 25% (CDL-07.015/002/017)	max. 10% (CDL-07.015/002/017)
Colour	grey	grey	grey
Tintable	yes	yes	yes
Anti Corrosive	yes	yes	yes
Use with Water Borne Base Coats	yes	yes	yes
Use with Solvent Borne Base Coats	yes	yes	yes
Pot Life at 20°C	up to 1h	up to 1 h	up to 1 h
Spray Viscosity (20°C, DIN cup 4mm)	25 - 30 s	25 - 30 s	48 - 52 s
Nozzle	1.6 - 2.2 mm	1.6 - 1.8 mm	1.8 - 2.2 mm
Number of layers	1 - 3 normal coats	2 - 3 normal coats	2 - 3 normal coats
Theoretical coverage	10 m²/l (at a layer thickness 60 µm)	7 - 7.5 m²/l (at a layer thickness 80 µm)	8 m²/l (at a layer thickness 80 µm)
Film Thickness	55 - 180 µm	100 - 240 µm	140 - 240 µm
Flash Off at 20°C	5 - 7 min	8 - 10 min	10 min
Shelf Life	12 months	18 months	12 months
Density	1.44 - 1.48 g/cm³	1.55 - 1.59 g/cm³	1.52 - 1.56 g/cm³
VOC Content	< 540 g/l	< 540 g/l	< 540 g/l
Sanding dry	P 400 - P 600	P 400 - P 600	P 320 - P 600
Sanding wet	P 800 - P 1000	P 800 - P 1000	not recommended
Remark	Also available in colours: CPG-02.097 - 4:1 Filler "R" White CPG-02.099 - 4:1 Filler "R" Black	Also available in colours: CPG-02.016 - 5:1 Filler THN White CPG-02.015 - 5:1 Filler THN Black	

PREMIUM	PREMIUM	CLASSIC	CLASSIC
CPG-02.012	CPG-02.107	CPG-02.023	CPG-02.018
5:1 Filler THN Light Grey	6:1 Wet on Wet Filler PLUS	1K Acrylic Filler	6:1 Wet on Wet Filler
Latest generation of acrylic fillers, containing OH groups for better chemical resistance. High thixotropy, very good filling properties, anti corrosive.	Innovative 6:1 Wet-on-Wet filler. Safe and easy application. No negative influence on base coat and / or clear coat at all! Colour and gloss level are same as compared to the use of sanding-fillers! Thus suitable for all applications and quality paint jobs!	1K filler with very good filling properties compared to other 1K products. Adheres also to many plastics and most metals (see TDS). Very good anti corrosion and insulation capacities - ideal for new panels or smaller areas.	Multi-purpose filler for wet-on-wet or standard application. Wet-on-wet especially suitable for new panels, very good flow and insulation. As standard filler ideal for spot repair.
*****	*****+	*****	*****
*****	***+	***	***+
*****	*****	****	****
****	*****+	*****	*****+
CDL-04.012	CDL-04.064	-----	CDL-04.021
CDL-04.061	-----	-----	-----
-----	-----	-----	-----
-----	CDL-04.065	-----	CDL-04.036
CDL-04.051	-----	-----	-----
-----	-----	-----	-----
yes	yes	yes	yes
5:1 by volume	6:1 by volume	2:1 by volume	6:1 by volume
20 - 30 min (dep. on hardener)	- / 20 - 30 min (w-o-w / filling) (dep. on hardener)	5 - 10 min	- / 20 - 30 min (w-o-w / filling) (dep. on hardener)
4.5 - 12 h (dep. on hardener)	15 - 40 min / 3 - 6 h (w-o-w / filling) (dep. on hardener)	20 - 25 min	15 - 40 min / 3 - 6 h (w-o-w / filling) (dep. on hardener)
7 - 15 min (short and med. wave)	- / 12 - 15 min (w-o-w / filling) (short and med. wave)	not recommended	- / 12 - 15 min (w-o-w / filling) (short and med. wave)
20 - 25% (CDL-07.015/002/017)	10% (w-o-w) (CDL-07.002/015)	additionally max. 30% (CDL-07.010)	15% / 5% (w-o-w / filling) (CDL-07.002/015)
light grey	grey	grey	grey
yes	yes	yes	yes
yes	yes	yes	yes
yes	yes	yes	yes
yes	yes	yes	yes
up to 1 h	up to 1h	-	up to 1 h
30 - 35 s	20 - 23 s (filling version) 18 - 20 s (wet-on-wet version)	15 - 18 s	17 - 19 s / 19 - 22 s (w-o-w / filling)
1.6 - 1.8 mm	1.2 - 1.3 mm / 1.3 - 1.6 mm (w-o-w / filling)	1.3 - 1.8 mm	1.2 - 1.3 mm / 1.3 - 1.6 mm (w-o-w / filling)
2 - 3 normal coats	1 / 1 - 2 coats (w-o-w / filling)	1 - 2 normal coats	1 / 1 - 2 coats (w-o-w / filling)
7 - 7.5 m²/l (at a layer thickness 80 µm)	19 m²/l (w-o-w, at a layer thickness 30 µm) 12 m²/l (filling, at a layer thickness 50 µm)	9.5 m²/l (at a coating thickness 45 µm)	17.5 m²/l (w-o-w, at a layer thickness 30 µm) 14 m²/l (filling, at a layer thickness 40 µm)
90 - 240 µm	30 µm / 50 - 80 µm (w-o-w / filling)	35 - 45 µm	30 µm / 40 - 80 µm (w-o-w / filling)
8 - 10 min	- / 5 - 7 min (w-o-w / filling)	3 - 5 min	- / 5 - 7 min (w-o-w / filling)
18 months	12 months	12 months	12 months
1.60 - 1.65 g/cm³	1.43 - 1.47 g/cm³	1.33 - 1.37 g/cm³	1.37 - 1.41 g/cm³
< 540 g/l	< 540 g/l	< 540 g/l	< 540 g/l
P 400 - P 600	not required / P 400 - P 600 (w-o-w / filling)	P 400 - P 600	not required / P 400 - P 600 (w-o-w / filling)
P 800 - P 1000	not required / P 800 - P 1000 (w-o-w / filling)	P 800 - P 1000	not required / P 800 - P 1000 (w-o-w / filling)

CLASSIC	CLASSIC	ECONOMY	ECONOMY
CPG-02.003	CPG-02.125	CPG-02.063	CPG-02.064
4:1 Filler Grey	5:1 Filler THX Grey	4:1 Filler EC Grey	5:1 Filler EC
The benchmark for 4:1 fillers! Very high solid content, very good filling, high thixotropy, good flow and levelling, no runs. With nozzle 2.2 thicker layers possible. Good for dark shaded top-coats.	Highly thixotropic acrylic filler for application on steel surfaces, polyester putties, old coatings and polyester laminates. Spray viscosity can perfectly be adjusted for the different application requirements. Good filling and insulating properties, very easy sanding, anticorrosive.	Acrylic filler, suitable for all major filling jobs in the modern body shop.	Economic filler, being suitable for all major filling jobs in the modern bodyshop.
****	****	****	***+
*****	***+	****	****
****	*****	****	***
****	****	****	****
CDL-04.015	-----	CDL-04.048	CDL-04.049
-----	CDL-04.049	-----	-----
CDL-04.014	CDL-04.072	-----	-----
CDL-04.026	-----	-----	-----
-----	-----	-----	-----
CDL-04.059	-----	-----	-----
yes	yes	yes	yes
4:1 by volume	5:1 by volume	4:1 by volume	5:1 by volume
20 - 60 min (dep. on hardener)	20 - 35 min (dep. on hardener)	30 min	30 min
3 - 12 h (dep. on hardener)	3.5 - 5.5 h (dep. on hardener)	5 - 7 h	5 - 7 h
12 - 20 min (short and med. wave) - dep. on hardener	7 - 15 min (short and med. wave)	7 - 15 min (short and med. wave)	7 - 15 min (short and med. wave)
10 - 20% (CDL-07.015/002/017)	20 - 30% (CDL-07.015/002/017)	max. 10% (CDL-07.015/002/017)	max. 15% (CDL-07.015/002/017)
grey	grey	grey	grey
yes	yes	yes	yes
yes	yes	no	no
yes	yes	yes	yes
yes	yes	yes	yes
up to 1 h	up to 1 h	up to 1 h	up to 1 h
25 - 30 s	35 - 55 s	25 - 30 s	25 - 30 s
1.5 - 2.2 mm	1.6 - 2.0 mm	1.6 - 1.8 mm	1.6 - 1.8 mm
1 - 3 normal coats	2 - 3 normal coats	2 - 3 normal coats	2 - 3 normal coats
7 - 8 m²/l (at a layer thickness of 80 µm)	8.5 - 9 m²/l (at a layer thickness 65 µm)	11.5 - 12 m²/l (at a layer thickness 50 µm)	12 - 13 m²/l (at a layer thickness 50 µm)
50 - 240 µm	100 - 195 µm	80 - 150 µm	80 - 150 µm
10 - 20 min (dep. on hardener)	5 - 10 min (dep. on hardener)	7 - 10 min	7 - 10 min
18 months	18 months	18 months	18 months
1.56 - 1.60 g/cm³	1.52 - 1.54 g/cm³	1.45 - 1.49 g/cm³	1.45 - 1.49 g/cm³
< 540 g/l	< 540 g/l	< 540 g/l	< 540 g/l
P 400 - P 600	P 400 - P 600	P 400 - P 600	P 400 - P 600
P 800 - P 1000	P 800 - P 1000	P 800 - P 1000	P 800 - P 1000
Also available in colours: CPG-02.001 - 4:1 Filler White CPG-02.002 - 4:1 Filler Black	Also available in colours: CPG-02.126 - 5:1 Filler THX White CPG-02.127 - 5:1 Filler THX Black	Also available in colours: CPG-02.121 - 4:1 Filler EC White CPG-02.122 - 4:1 Filler EC Black	

Our Fillers

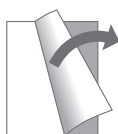
Invisible for car-owners, unavoidable for car painters: the filler! In the modern refinish process, the filler plays an important role.

A filler does not only build a perfect foundation for the base coat – CAP's fillers contain high quality anti-corrosion pigments which decisively help to ensure that painter's customers can enjoy their refinished cars for years to come!

CAP's portfolio contains materials for any end-user requirement: from a wet-on-wet 6:1 filler to a top performance filler, building a high film thickness with best-in-class filling properties – all standards and niches are served! With especially formulated hardeners with different reactivities and additives, such as reactivity-accelerators or pigment pastes, many fillers may on-site be adapted within their characteristics according to customer's preferences or according to different climate conditions.

The professional user, however, has further requirements to a modern filler. Apart from perfect adhesion to surface, which may be taken for granted with CAP's fillers, other properties are of great importance. Safe film-building, complete filling of imperfections, flow, perfect tension as well as preferably effortless sanding are the decisive criteria for a good quality filler.

In our filler range, we have the perfect match for all applications; and what does not fit (yet), will be formulated for you!



Our Putties:

Product Category	PREMIUM	PREMIUM	PREMIUM	PREMIUM	PREMIUM
Product	CSX-01.023	CSX-01.027	CSX-01.039	CSX-01.017	CSX-01.030
Description	Next Gen Light Multi Putty	Next Gen Glass Putty	Multi Light Protector Putty	Anti Corrosion Putty	Black Carbon Putty
Features	Lightweight multifunctional putty made from latest raw-materials. Outstanding performance features. Extra light (-45%) without any negative influence on the surface quality. Very easy sanding and lowest sanding paper clogging.	Lightweight multifunctional glass fiber fine putty - exceeds highest expectations to performance! Delivers unexpected results from a glass fiber-reinforced putty - creates excellent surfaces - no need for fine putty after application! Easiest sanding even after several days!	Multifunctional lightweight putty, equipped with high-efficient anti-corrosion pigments. Excellent wetting of the substrate, use of etch-primers can be avoided. For the most ambitious repair jobs. Easy and safe application, pore-free surface, very easy sanding.	Fine putty equipped with Advanced Anti Corrosive Technology. May be applied directly to the non-primed steel surface. Very easy and safe application, creates due to finest filling materials very smooth surfaces.	Putty system, reinforced with genuine carbon fibers for very durable repair jobs. Significantly increases the mechanical strength of the repaired panel. Good shaping and very smooth to apply, very low sanding paper clogging.
Surface	*****⬆	*****	*****⬆	*****	****
Application	*****	*****⬆	*****⬆	*****	****
Sanding	*****⬆	*****⬆	*****⬆	*****	****
Shaping	****	*****	*****⬆	**	****
Specification:					
VOC-Conform	yes	yes	yes	yes	yes
Hardener Addition	2 - 3% by weight	2 - 3% by weight	2 - 3% by weight	2 - 3% by weight	2 - 3% by weight
Thinner Addition	-	-	-	-	-
Colour	beige	canary yellow	light beige	red	black
Advanced Anti Corrosive Technology	no	no	yes	yes	no
Multi Functional	yes	yes	yes	no	no
Plastic Adhesion (details in TDS)	use not recommended	use not recommended	use not recommended	use not recommended	use not recommended
Aluminum Adhesion	yes	yes	yes	yes	yes
Steel Adhesion	yes	yes	yes	yes	yes
Zinc Coated Steel Adhesion	yes	yes	yes	no	no
Sanding Plus Technology ©	yes	yes	yes	yes	no
Body Filling	8 - 10 min	3 - 5 min	3 - 5 min	3 - 5 min	4 - 6 min
Drying Time at 20°C	16 - 30 min	16 - 30 min	20 - 30 min	16 - 30 min	25 - 30 min
Temperature resistance max.	65°C	65°C	65°C	65°C	65°C
Infrared Drying	not recommended	not recommended	not recommended	not recommended	not recommended
Shelf Life at 20°C	12 months	12 months	9 months	9 months	12 months
Density	0.96 - 0.97 g/cm³	~ 1.10 g/cm³	1.40 - 1.50 g/cm³	1.80 - 1.90 g/cm³	1.82 - 1.84 g/cm³
VOC Content	< 250 g/l	< 250 g/l	< 250 g/l	< 250 g/l	< 250 g/l
Sanding dry	P 150 - P 320	P 120 - P 320	P 150 - P 320	P 120 - P 320	P 120 - P 320
Sanding wet	not recommended	not recommended	not recommended	not recommended	not recommended
Remark					Also available: CSX-01.040 - Carbo Multi Light Putty

PREMIUM	PREMIUM	CLASSIC	CLASSIC	CLASSIC	CLASSIC
CSX-01.038	CSX-01.037	CSX-01.041	CSX-01.035	CSX-01.036	CSX-01.032
Multi Plastic Putty	3D Protector	Multi Classic Putty	Spray Plus Putty	Multi Plus Putty	Light Plus Putty
Innovative putty, which is not only adhering to all plastic surfaces, incl. Polypropylene, but also to all sheet metal surfaces, incl. Aluminum and galvanized steel. Highly elastic, easy application, smooth and pore-free surface, very easy sanding. A true all in one product for the professional body shop!	Multifunctional putty with anti-shrinking properties. Patented product. It prevents contour marks after repair process and ensures the best adhesion to all sheet metal surfaces. Very soft and easy to sand, absolutely no sanding paper clogging.	The putty for all major jobs! Multifunctional, very easy application, very good adhesion and easy sanding. Compared to Multi Plus reduced viscosity.	Spray Plus Putty is a two-component spray filler based on high quality raw materials. Excellent adhesion to glass fiber reinforced plastic, metal, wood, polyester laminates, hard plastic and elements protected by anticorrosive primers. Suitable for filling uneven areas and to finish surfaces previously repaired with putties for cars, trucks, busses and railroad cars. Very easy sanding.	Multifunctional putty. The benchmark for all multifunctional putties. Combines the very good properties of a fill-putty with the high surface quality of a finishing putty. Tack-free surface after curing!	Multifunctional light weight putty, density reduced by approx. 25% compared to standard putties. Very easy and safe application, easy sanding, no sanding paper clogging. Good for larger surfaces.
*****⬆	*****	*****	*****⬆	*****	****
*****⬆	*****	*****	*****	*****	*****
*****	*****	*****	*****	*****	*****
****	****	****	-	****	****
yes	yes	yes	yes	yes	yes
2 - 3% by weight	2 - 3% by weight	2 - 3% by weight	3% by weight (CDL-04.018)	2 - 3% by weight	2 - 3% by weight
-	-	-	max. 2.5% by weight (CDL-07.021)	-	-
dark grey	white	yellow	grey	yellow	yellow
no	no	no	no	no	no
yes	yes	yes	no	yes	yes
yes	no	use not recommended	use not recommended	use not recommended	use not recommended
yes	yes	yes	yes	yes	yes
yes	yes	yes	yes	yes	yes
yes	yes	yes	no	yes	yes
no	no	yes	no	yes	yes
3 - 5 min	3 - 5 min	4 - 6 min	pot life 20 - 30 min	3 - 5 min	4 - 6 min
20 - 30 min	20 - 30 min	20 min	3 - 5 h (30 min at 60°C)	20 min	20 - 30 min
65°C	65°C	65°C	65°C	65°C	65°C
not recommended	not recommended	not recommended	not recommended	not recommended	not recommended
9 months	12 months	12 months	9 months	12 months	12 months
2.00 - 2.10 g/cm³	1.90 - 2.00 g/cm³	1.97 - 1.99 g/cm³	1.64 g/cm³	1.84 - 1.86 g/cm³	1.40 - 1.50 g/cm³
< 250 g/l	< 250 g/l	< 250 g/l	< 540 g/l	< 250 g/l	< 250 g/l
P 150 - P 320	P 150 - P 320	P 150 - P 320	P 120 - P 180	P 120 - P 320	P 120 - P 320
not recommended	not recommended	not recommended	not recommended	not recommended	not recommended
Also available: CSX-01.063 - Multi Plastic Beige Putty		Also available: CSX-01.064 - Unifill Putty CSX-01.067 - Universal Plus Putty			Also available: CSX-01.044 - Multi Light Putty CSX-01.071 - Light Unifill Putty

CLASSIC	CLASSIC	CLASSIC	CLASSIC	CLASSIC	ECONOMY
CSX-01.010	CSX-01.020	CSX-01.015	CSX-01.053	CSX-01.057	CSX-01.018
Alu Putty	Glass Putty Blue	Fine Putty	1K NC Multi Filler Paste	Multi Soft Putty	Fill Putty Yellow
Fine filling putty, containing Aluminium pigments. Combines the good filling properties with a very good surface quality. Additional use of fine putty not mandatory. High temperature resistant.	Glass fibre reinforced putty, good filling and bridging properties. Advanced sanding and better surface than usual glass fiber putties.	Benchmark fine filling putty. Very easy spreading, creates perfect surfaces. Sanding Plus Technology © grants easy sanding without sanding paper clogging.	One-component, ready to use product, based on nitrocellulose resins. Multifunctional, thus also to be used on aluminum and galvanized substrates. Designed for repair of small imperfections. Provides smooth, fast drying coating with very good flexibility.	Multifunctional putty. Characterised by very soft, creamy consistency, easy to apply and shape. Creates an elastic, very smooth, pore-free surface. It may be applied in thick and thin layers. Does not clog the sandpaper.	Fill putty for all general works in the modern body shop. An economical product with no compromise to the quality of raw-materials used - consistant quality is guaranteed.
****	**	*****	*****	*****	***⬆
****	****	*****	*****	*****	****
****	****	*****	*****	*****	***
*****	****	***	***	*****	***
yes	yes	yes	yes	yes	yes
2 - 3% by weight	2 - 3% by weight	2 - 3% by weight	-	2 - 3% by weight	2 - 3% by weight
-	-	-	-	-	-
metallic	blue	yellow	light grey	dark yellow	yellow
no	no	no	no	no	no
no	no	no	yes	yes	no
use not recommended	use not recommended	use not recommended	no	yes	use not recommended
no	yes	yes	yes	yes	no
yes	yes	yes	yes	yes	yes
no	no	no	yes	yes	no
yes	yes	yes	no	yes	no
3 - 5 min	3 - 5 min	3 - 5 min	-	4 - 6 min	3 - 5 min
16 - 30 min	16 - 30 min	16 - 30 min	30 - 50 min (dep. on the thickness)	20 - 30 min	16 - 30 min
80°C	65°C	65°C	65°C	65°C	65°C
not recommended	not recommended	not recommended	not recommended	not recommended	not recommended
12 months	12 months	12 months	12 months	12 months	12 months
1.78 g/cm³	1.75 g/cm³	1.87 g/cm³	1.67 - 1.69 g/cm³	1.60 - 1.70 g/cm³	1.90 g/cm³
< 250 g/l	< 250 g/l	< 250 g/l	< 250 g/l	< 250 g/l	< 250 g/l
P 150 - P 320	P 120 - P 320	P 150 - P 320	P 240 - P 400	P 150 - P 320	P 100 - P 320
not recommended	not recommended	not recommended	P 240 - P 400	not recommended	not recommended
Also available: CSX-01.069 - ALU THX Putty	Also available: CSX-01.002 - Glass Putty Green CSX-01.062 - Glass Black Putty	Also available: CSX-01.012 - Fine Putty White CSX-01.014 - Fine Putty Blue			Also available: CSX-01.016 - Fill Putty Blue CSX-01.052 - Fill Putty Grey CSX-01.061 - Fill Black Putty

Our Putties

The importance of putties in the refinish process is very often underestimated, with expensive consequences for the painter. Actually, putty builds the foundation for the refinish job, which must be solid and absolutely accurate; otherwise, the perfect refinish result is in danger. "Putty mistakes" are always very expensive mistakes since all individual operations have to be made again, from start to finish: sanding, putty, sanding, filler, sanding, base coat, clear coat, polishing..., to repair them. Not to mention that the painter can charge none for this extra-work – he has to bear the costs himself, with negative effects on the profit!

Like no other product, putties are very often the topic of conversation between experts – so incompatible different regional and international tastes seem to be! One prefers a "hard" putty when spreading, the other likes it "creamy"; one can only accept putty in white, the other claims that only "yellow" works satisfactory. Putties are "classic", per se, in the refinish process, animating one or another producer to re-invent this material from time to time...

Many "reinventions" have not met any demand and have been rejected by professionals. For this reason, some end-users take a critical attitude towards new putty types.

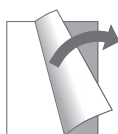
Further to the putties however, CAP has remained true again to its chosen path – orientation to the daily job!

The results of our research and development work are products which show significant differences compared to other putty qualities on the market; feedback to our qualities is, in almost all cases, very positive!

Apart from very convenient viscosity, which allows optimum spreading and shaping, in particular "Sanding Plus Technology®" is highly appreciated.

While ordinary putties have to be sanded at first with abrasives of P80 or P100 grit, the sanding job of putties equipped with "Sanding Plus Technology®" starts with P120 / P150 grit abrasives! Finer abrasive grits causing significantly less severe sanding marks thus the use of a second putty layer or additional fine putty can be avoided! "Sanding Plus Technology®" allows easy sanding jobs even up to 72 hours after the putty is fully cured!

Significantly less work and therefore time saving, just at the beginning of the repair process.



Our Miscellaneous Products:

Product Category	Bonding and Sealing
Product	CKK-05.016/017/018
Description	Stone Chip Protection Plus
Features	Classic elastomer based stone chip protection coating, bitumen free. Paintable and adheres also to critical substrates, incl.PVC. Available in white, black and grey.
Colour	white / black / grey
Pack Size	1 kg

Product Category	Cleaning and Degreasing
Product	CKX-10.009
Description	Booth Mask Stick Premium
Features	Booth Mask Stick Premium is a water-based cabin protection coating. It forms a sticky coat on the spray booth walls and provides protection from dust, overspray and other foreign particles to prevent defects in the paint job during the application. Booth Mask Stick Premium is transparent and does not have negative influence on the light conditions, thus perfect spray results can be achieved. Can easily be washed off the walls.
Colour	brownish transparent
Pack Size	5 l

Product Category	ADDITIVES and THINNERS
Product	CDL-07.010
Description	Thinner For 1K Acrylic Filler
Features	Acrylic thinner, especially developed for our filler CPG-02.023. Use of other thinners for our systems is not recommended. For further details, please refer to TDS of our fillers.
Colour	colourless
Pack Size	1 l

Product Category	ADDITIVES and THINNERS
Product	CPI-06.009
Description	Tinting Paste Red
Features	Pigment paste for the tinting of our 1K and 2K acrylic fillers.
Colour	red
Pack Size	0,5 l

Product Category	Body Repair
Product	CZY-10.005
Description	Repair Kit
Features	Fast curing polyester repair kit for the repair of rust holes and GRP components. Kit includes hardener and glass-fiber-mat.
Colour	light brown
Pack Size	250 g

Bonding and Sealing
CKU-05.012/013/014
Polyurethane Seam Sealer
Polyurethane based sealing compound for multi-purpose uses in the professional body shop. Paintable, sandable. Available colours: white, grey and black.
white / grey / black
310 ml

Cleaning and Degreasing	Cleaning and Degreasing
CDL-07.022	CDL-07.012/011/003
Cleaner Fast Apple (solvent based)	Cleaner Fast / Standard / Slow (solvent based)
Short solvent based cleaner with apple scent for all general cleaning jobs prior to painting. The fresh apple scent masks the typical bad smell of standard cleaners and makes the daily work in the body shop more pleasant.	Solvent based cleaner for all general surface cleaning jobs prior to painting. Available as short, standard and long version, for different climate conditions.
colourless	colourless
1 l and 5 l	1 l and 5 l

ADDITIVES and THINNERS	ADDITIVES and THINNERS
CDL-07.004	CDL-07.015/002/017
Accelerator Additive	Acrylic Thinner Slow / Standard / Fast
May enhance drying time of our fillers by up to 15%. Please refer to TDS for restrictions in use.	Acrylic thinner, developed especially for our clear coats and fillers. Use of other thinners for our systems is not recommended. For further details, please refer to TDS of our fillers.
colourless	colourless
1 l	1 l and 5 l

ADDITIVES and THINNERS	ADDITIVES and THINNERS
CPI-06.010	CPI-06.011
Tinting Paste Blue	Tinting Paste Green
Pigment paste for the tinting of our 1K and 2K acrylic fillers.	Pigment paste for the tinting of our 1K and 2K acrylic fillers.
blue	green
0,5 l	0,5 l

Body Repair	Painting
CZY-10.004	CDL-07.013
Repair Resin	Spot Blender
Additional resin for CZY-10.005, incl. hardener.	Spot Blender is ideal for spot repair and for the blending of 2K clear coats. Designed for the elimination of optical differences between resprayed and old clear coat.
light brown	colourless
1 kg	1 l

Cleaning and Degreasing
CDL-07.009
Cleaner (water based)
Water based cleaning agent for all general surface cleaning jobs prior to painting.
milky
1 l and 5 l

ADDITIVES and THINNERS	ADDITIVES and THINNERS
CDL-07.024	CDL-07.029
Top Gloss Additive	Elastic Additive
Top Gloss Additive is a special product designed to enhance the characteristic of acrylic based products, especially HS and MS clear coats. It puts the gloss of those clear coats to a higher level. Moreover, the application properties are significantly improved by this special additive. Application is easier, mistakes can hardly be made. E.g. boilers, due to too thick layers, can be avoided.	Special additive designed to improve flexibility of 2K solvent borne fillers and clear coats. It enhances their adhesion and elasticity thus prevents cracking. Suitable for car refinish coatings applied on plastic or metal panels and areas/car body parts which are exposed to stone impact and strain.
colourless	Colourless / slightly yellow
1 l and 5 l	1 l

ADDITIVES and THINNERS
CPI-06.012
Tinting Paste Black
Pigment paste for the tinting of our 1K and 2K acrylic fillers.
black
0,5 l

Our Miscellaneous Products

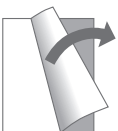
Expand your product range to other fields: bonding and sealing, cleaning, body repair, etc. – fast, uncomplicated with the smallest stock and therefore cost effective.

Order corresponding add-on products together with your own clear coat, filler and putty, produced of course according to your corporate design!

In this way, most of our customers complete their product range cost-effectively and uncomplicatedly. Because many products are purchased from one source, order processes are smoothened and more effective. Furthermore, due to

better use of the shipping space, the corresponding freight costs can be significantly reduced, yet another aspect for our customers to decide about to complete their product range with the add-on products of CAP.

This program is being constantly extended; we show in our tables only an extract of the materials being most frequently bought. The complete list can be found on our web page: www.cap.pl, or contact our sales team directly!



Packing Information:

Clear Coats					
Container and Item	Pcs per Box	Boxes per Pallet	Pcs per Pallet	Pcs per layer	Layers per pallet
Clear Coat & Hardener 1,5 L set	12	30	360	72	5
Clear Coat 1 L	12	30	360	72	5
Clear Coat 5 L	4	24	96	32	3
Clear Coat Hardener 0,5 L	12	60	720	72	10
Clear Coat Hardener 1 L	12	30	360	72	5
Clear Coat Hardener 2,5 L	4	48	192	32	6

Putties						
Container and Item	Pcs per Box	Boxes per Pallet	Pcs per Pallet	Pcs per layer	Layers per pallet	BPO
Putty 200 g / 250 g	24	100	2400	240	10	8 g
Putty 500 g	24	40	960	120	8	15 g
Putty 750 g	24	30	720	120	6	30 g
Putty 1 kg	10	50	500	50	10	30 g
Putty 1 l/1,5-1,7kg	10	40	400	50	8	40 g
Putty 1,8 kg / 2,0 kg	10	35	350	50	7	40g (1.8 kg) 50g (2 kg)
Putty 3 kg	4	36	144	24	6	2 x 30 g
Putty 3,5L	2	60	120	24	5	3 x 40 g
Putty 4,5 kg	4	36	144	24	6	3 x 40 g
Putty 6-7kg	2	48	96	24	4	3 x 40 g (6 kg) 4 x 40 g (7 kg)
Putty 9kg	-	-	72	24	3	6 x 40g
Putty Cartridge 1,5 kg	6	30	360	72	5	40 g
Putty Cartridge 3 kg	6	30	180	60	3	55 g
Spray Putty 1,2 kg	12	30	360	72	5	40 g CHP

Fillers					
Container and Item	Pcs per Box	Boxes per Pallet	Pcs per Pallet	Pcs per layer	Layers per pallet
1K Acrylic Filler	12	30	360	72	5
1K Acrylic Filler Thinner	12	30	360	72	5
4:1 Filler 1,25 L set	12	30	360	72	5
4:1 Filler 1 L set	12	30	360	72	5
4:1 Filler 0,8 L	12	30	360	72	5
4:1 Filler 1,0 L	12	30	360	72	5
4:1 Filler 3,6 L	4	30	120	24	5
4:1 Filler Hardener 0,2 L	12	200	2400	240	10
4:1 Filler Hardener 0,25 L	12	120	1440	144	10
4:1 Filler Hardener 0,9 L	4	90	360	60	6
5:1 Filler 0,96 L set	12	30	360	72	5
5:1 Filler 1,2 L set	12	30	360	72	5
5:1 Filler 4,8 L set	2	42	84	14	7
5:1 Filler 0,8 L	12	30	360	72	5
5:1 Filler 1 L	12	30	360	72	5
5:1 Filler 3,5 L	4	30	120	24	5
5:1 Filler 4 L	4	30	120	24	5
5:1 Filler Hardener 0,16 L	12	200	2400	240	10
5:1 Filler Hardener 0,2 L	12	200	2400	240	10
5:1 Filler Hardener 0,7 L	4	90	360	60	6
5:1 Filler Hardener 0,8 L	4	90	360	60	6
6:1 Filler 1,05 L set	12	30	360	72	5
6:1 Filler 0,9 L	12	30	360	72	5
6:1 Filler 3,6 L	4	30	120	24	5
6:1 Filler Hardener 0,15 L	12	200	2400	240	10
6:1 Filler Hardener 0,6 L	4	90	360	60	6

Miscellaneous Products						
Container and Item	Product Index	Pcs per Box	Boxes per Pallet	Pcs per Pallet	Pcs per layer	Layers per pallet
Stone Chip Protection Plus 1 kg	CKK-05.016/017/018	12	45	540	108	5
Polyutherane Seam Sealer 310 ml	CKK-05.012/013/014	12	50	600	120	5
Spotblender 1,0 L	CDL-07.013	12	30	360	72	5
Accelerator 1 L	CDL-07.004	12	30	360	72	5
Cleaner Solvent 1 L	CDL-07.003/011/012/022	12	30	360	72	5
Cleaner Solvent 5 L	CDL-07.003/011/012/022	4	30	96	32	3
Cleaner Water 1 L	CDL-07.009	9	30	270	90	3
Cleaner Water 5 L	CDL-07.009	3	30	90	30	3
Thinner 1 L	CDL-07.002/015/016/017/025/026	12	30	360	72	5
Thinner 5L	CDL-07.002/015/016/017/025/026	4	30	96	32	3
Top Gloss Additive 1 L	CD-07.024	12	30	360	72	5
Degreaser 1 L plastic bottle	CDL-07.009	9	30	270	90	3
Degreaser 5 L	CDL-07.009	3	30	90	30	3
Pigment Paste 0,5 L	CPI-06.09/10/11/12	30	18	540	108	5
Polyester Repair Kit 250 ml	CZY-10.005	20	60	1200	120	10
Repair Resin incl. Hardener 1 kg	CZY-10.014	12	30	360	72	5
Booth Mask Stick Premium 5 L	CKX-10.009	3	30	90	30	3
Elastic Additive 1 L	CDL-07.029	12	30	360	72	5

Packing Solutions

CAP offers a vast variety of quality packing solutions already as standard.

We are aware, that the individualization of your products is not only done by a label, also the outer packaging must be in full accordance to your CI, respectively to your ERP system requirements.

QR-codes, EAN-codes, BAR-codes, each pallet, each carton box will be packed and marked as per your request.

Standard packing solutions and individual box- and pallet markings are already included in our offer. Should you require however an individual type of packing, no matter if a special printed carton box or a particular container for the putties, if such a material is available on the market, we will source it for you!

Please note, that individual packing solutions may be subject to surcharges.

No matter what type of packaging is chosen, we make sure, that the high quality products are going to arrive in perfect condition at our customer's warehouses all over the world. In order to grant the best possible result, we inspect each truck before loading and we log each pallet and the completely loaded truck by camera.

On the following sides, you will find information on the standard packaging of our products.







Chemical Alliance Polska Sp. z o.o.
ul. Prosta 23, Łozienica, 72-100 Goleniów, PL
tel. +48 91 41 65 440, fax +48 91 41 65 487

info@cap.pl
www.cap.pl